



user GUIDE

travelDRIVE™

USB 2.0 FLASH DRIVE

Rev. 2.0C



Thank you for purchasing the Memorex® TravelDrive™ USB 2.0. This user's guide will help you get the maximum use and enjoyment from your new TravelDrive.

I. Description

The Memorex® TravelDrive™ is a portable storage device utilizing a plug-and-play USB (Universal Serial Bus) interface that allows it to function as if it were an external hard drive. Based on USB 2.0 standards, the TravelDrive™ is useable in either an available USB 1.1 or 2.0 port. Your computer easily recognizes the TravelDrive™ once it is inserted into your USB connection. You can drag and drop files to or from the TravelDrive™ just as you would to a floppy disk or a hard drive with the added benefit of a faster, far more secure and portable data storage solution than most other previous alternatives.



II. System Compatibility:

The Memorex® TravelDrive™ can be used with any computer that has either a USB 2.0 or 1.1 port. The TravelDrive™ has the following minimum system requirements:

- Pentium PC or Apple Macintosh Computer with USB Support
- PC - Windows® 98SE*(Second Edition) or later - Windows® Me / 2000 / XP
- Linux 2.4.x (Please see Memorex website under FAQ's for Mounting on Linux)
- Mac OS 8.6 or above
- Available USB 2.0 (for High Speed) or USB 1.1 port
- Internet Connection* (Windows® 98SE only)

* System Requirements and Specifications are subject to change without notice.

III. Contents:

Your Memorex® TravelDrive™ Kit includes:

1. Memorex® TravelDrive™
2. TravelDrive™ QuickStart Guide
3. Lanyard Carrying Strap

IV. Memorex® TravelDrive™ Features:

The Memorex® TravelDrive™ was designed to provide convenient, easy to carry transportable data storage for important files, music, video or photos wherever you go. Some of the key features are:

- **USB 2.0 compliance** for the fastest data transfer speeds-up to 10 times faster than USB 1.1
- **Backward compatibility** for use with computers installed with USB 1.1 ports.
- **No moving parts**, providing safer, more secure and reliable storage than most other portable storage solutions.
- **No specific hardware requirements for use on most computer systems.** Uses standard USB port available on most computers today and requires no driver installation (except Windows® 98SE) for use. Just plug in and go.
- **Works between both PC and Macintosh platforms.** Allows convenient swapping of files from either system platform (*FAT and FAT32 file systems only*).
- **No batteries or power adapters required.** USB port power driven.
- **Snap-on cap** offers protection of the USB connector from damage or the elements when not in use.
- **LED power indicator and activity monitor** lets you know that the drive is active to assure safe data transfers.
- **External Write / protect switch** to prevent accidental erasure of valuable data.

** Windows 98SE requires windows drivers available as a download from the Memorex website. See detailed instructions under section VI. of this document.*

V. Getting Started:

Check your Operating System (OS):

- **For Windows® Me, Windows® 2000 & Windows® XP**

There is no need to install any software or drivers! Go straight to section VII. **Using Your TravelDrive™** below and follow the instructions to begin using your TravelDrive™.

- **For Windows® 98SE**

You will need to install a driver for the computer to recognize the TravelDrive™. See section VI. **Windows® 98SE Driver Installation** below.

- **For Windows® NT**

NT does not support USB. The TravelDrive™ is not supported in this OS.

- **For Windows® 98 or older**

Windows® operating systems prior to Windows® 98SE do not have adequate USB support, and therefore the TravelDrive™ is not supported with those operating systems. TravelDrives are not useable in PC's running Windows 98 or older operating systems.

VI. Windows® 98SE Driver Installation: (Internet Access Required)

If your computer uses Windows® 98 SE as its operating system, you must install a driver for your Memorex® TravelDrive™. The driver required is available for download if you have Internet access. The required file is titled "USB TravelDrive™ Version C Driver" and is located on the Memorex website at www.memorex.com/service_support/software.php. Follow the steps below to download and install the Version C driver:

NOTE: Do not insert your TravelDrive™ into your USB port until steps 1 through 12 below have been completed successfully.

1. Turn on your computer and wait for the Windows® desktop to appear.
2. Close any applications you may have running.
3. Download the necessary driver by launching your Internet browser and insert the following web address located on the Memorex website:

www.memorex.com/service_support/software.php.

- Select **SOFTWARE DOWNLOADS**, then **USB TRAVELDRIVES**.
- Click on **DOWNLOAD** under **TravelDrive Driver C**. Read the license agreement and if you agree to the terms, click on **I AGREE AND WISH TO PROCEED WITH THE DOWNLOAD**.
- When the download dialogue box appears, click on **SAVE**.

- Choose or create a folder on your hard drive in which you want to save the downloaded driver. You will need to install the driver from this folder after it has been downloaded.
- When the download is complete, click **CLOSE** from the dialogue box and exit the website.
- Click on the zipped file; it will automatically open up the software.
- When prompted, **save** the unzipped version to the same folder you chose to save the downloaded file.

Installing Driver 2C

4. Go to the folder in which you saved the driver and double-click on the Setup icon to open up the installation (Figure 1).



Figure 1

5. A Welcome dialogue box will appear to guide you through the installation of the drivers (Figure 2). Click on **NEXT**.

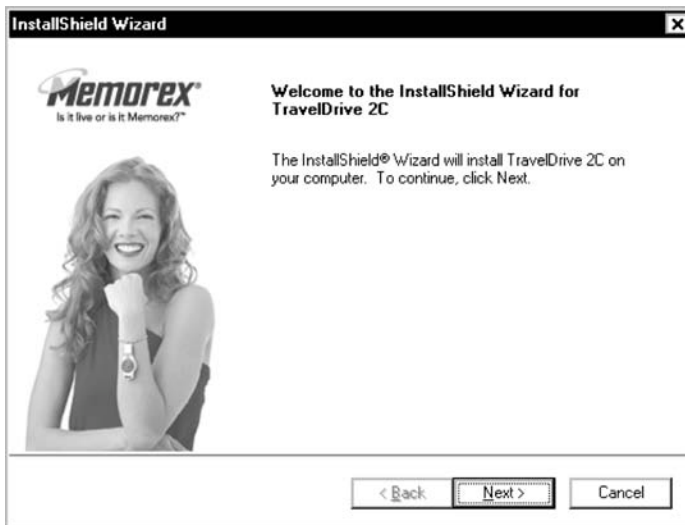


Figure 2

6. The License Agreement will now appear on your display. Click **Yes** to agree to the terms of the agreement and continue the software driver installation (Figure 3).



Figure 3

7. Click **NEXT** to install the Software Driver in the recommended folder C:\Memorex\TravelDrive2C (Figure 4).



Figure 4

8. Click **NEXT** to confirm and to begin installing the drivers onto your system (Figure 5).



Figure 5

9. An information window (Figure 6) "Please remove TravelDrive 2C if inserted" will now appear on your display. Remove the TravelDrive if it is currently inserted into your USB port and click OK to continue.



Figure 6

10. A Setup Status screen will now display the installation process, this may require a moment to complete, followed by a dialogue box requiring to restart your computer (Figure 7).

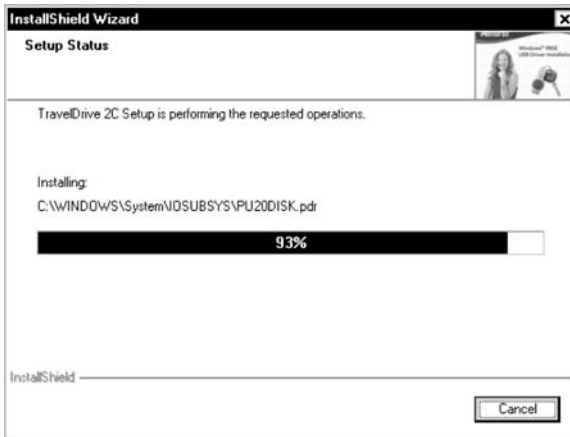


Figure 7

11. Restarting your computer is recommended, choose "Yes, I want to restart my computer now" and click on **Finish** to complete the driver installation process. Click on **Finish** again to reboot your computer (Figure 8).

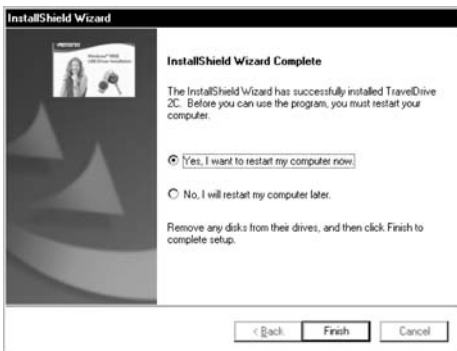


Figure 8



Figure 9

12. After rebooting your computer, your Memorex® TravelDrive™ is now ready to use. When you insert it into a USB port, your computer will identify the drive, find the driver, and automatically build it into the computer's driver database.

VII. Using Your Memorex® TravelDrive™:

Your new Memorex® TravelDrive™ is ready to use now. Follow the simple steps below to begin using your new portable storage device:

1. Remove the protective snap-on cap and insert your new TravelDrive™ into an available USB port on your computer (Figure 10).



Figure 10

NOTE: You may be required to wait a few minutes while your new TravelDrive™ is configuring itself to your computer system. (Click "OK" or "Agree" to any driver prompts should they appear).

2. For Windows® Me and 2000, it will simply return you to your desktop once the installation is finished. Windows® XP will provide a confirmation message that the new hardware is installed.
3. If you have not restarted your computer during the driver installation process and were not prompted to do so prior to this point, restart your computer now to complete the driver installation and drive setup.
4. Once your computer reboots, you can verify that Windows® recognizes the Memorex TravelDrive™ properly.
5. At the desktop screen double-click on "My Computer." The Memorex® TravelDrive™ should appear as a "Removable disk" icon. The actual drive letter assigned to your TravelDrive™ will vary depending on how many other drives are on your system (Figure 11).

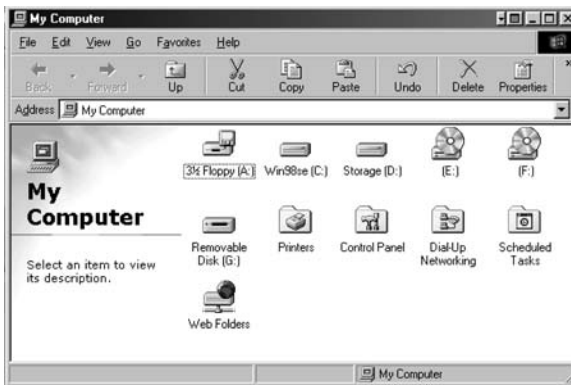
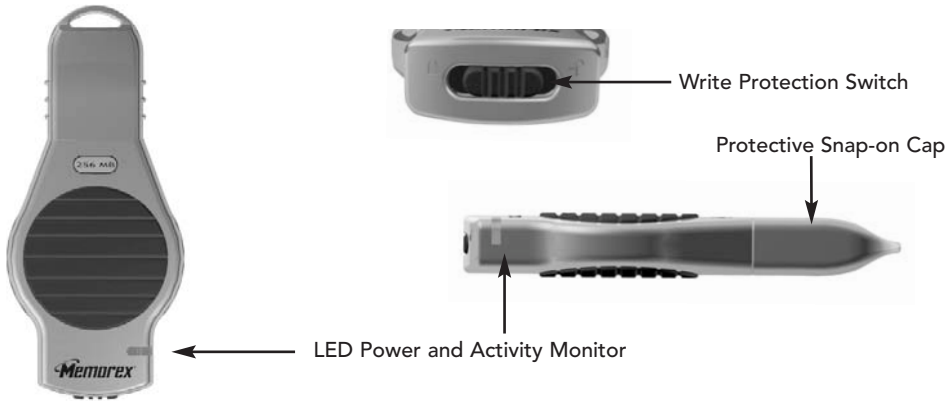


Figure 11

NOTE:The actual drive letter assigned to your TravelDrive™ will vary depending on how many other drives are on your system. (Multiple USB drives plugged into a computer operating under Windows® 98 may cause some problems, that is just one reason why it is not supported. Windows® 98 SE has resolved these types of conflicts.)

VIII. Standard Operation:



A) Microsoft Windows®

1. Remove the protective snap-on cap. The cap was designed with a keyhole to attach to the lanyard carrying strap for easy transport of your TravelDrive™ and safekeeping of your drive.
2. Insert the TravelDrive™ into a USB port on your computer. The green LED Power and Activity Monitor will light up to confirm that the drive is powered.
3. Double-click on the "My Computer" icon on your desktop, and then double-click on the "Removable Disk" icon.
4. You can now save, copy, or delete files to the TravelDrive™ just as you would to a hard drive or a floppy disk. The LED Power and Activity Monitor will flash quickly when data is being transferred to or from the TravelDrive™.
5. **Always wait for the LED to stop blinking and make sure no open files or other applications are currently using your TravelDrive™ before attempting to remove it from the USB port.**
 - a. For **Windows® Me/2000/XP**, select the TravelDrive™ in the drive listing under "My Computer" and right click to bring up options.
 - b. Selecting "Eject" from the drop-down menu will also safely remove the drive
 - c. For **Windows® 98 SE**, you merely have to unplug the TravelDrive™ from the USB port or USB connector cable to safely remove it.
6. Before removing the TravelDrive™ in Windows® Me, 2000 or XP, you can also click on the "Unplug or Eject Hardware" icon in the lower right task bar on your computer screen. (Figure 12). Select "Stop USB Mass Storage Device" with the correct drive letter assigned to your TravelDrive™. Unplugging the device without Stopping it or Ejecting it properly can cause your computer to become unstable.



Figure 12

IMPORTANT NOTE: Do not remove the TravelDrive™ while the LED is flashing! Interrupting the data flow while the LED is flashing will corrupt existing data that is being transferred as well as possibly other data stored on the drive. You may also lose access to your drive and your ability to retrieve any files stored on the TravelDrive™. Once the LED Stops blinking, the data transfer operation is complete; and it is safe to remove your drive.

B) Apple Macintosh

1. Remove the protective snap-on cap. The cap was designed with a keyhole to attach to the lanyard carrying strap for easy transport of your TravelDrive™ and safekeeping of your drive.
2. Insert the TravelDrive™ into a USB port on your computer. The green LED Power and Activity Monitor will light up to confirm that the drive is powered.
3. Click on the "Untitled" drive icon once the TravelDrive™ has been successfully mounted on your Mac OS Desktop (Figure 13).





Figure 13

4. You can now save, copy, or delete files to the TravelDrive™ just as you would to a hard drive or a floppy disk. The LED Power and Activity Monitor will flash quickly when data is being transferred to or from the TravelDrive™. Do not remove the TravelDrive™ while the LED is flashing! Interrupting the data flow while the LED is flashing will corrupt existing data, and you may not be able to retrieve any files stored on the TravelDrive™. Always wait for the LED to stop blinking, this will indicate when the data transfer operation is complete.
5. Before removing the TravelDrive™, drag its icon over to the Trash icon. Then unplug the TravelDrive™ from its USB port once the icon is not visible on your Mac OS Desktop.

IMPORTANT NOTE: Do not remove the TravelDrive™ while the LED is flashing! Interrupting the data flow while the LED is flashing will corrupt existing data that is being transferred as well as possibly other data stored on the drive. You may also lose access to your drive and your ability to retrieve any files stored on the TravelDrive™. Once the LED Stops blinking, the data transfer operation is complete; and it is safe to remove your drive.

C) Using the TravelDrive™ Features:

1. Write Protection Switch

Sliding the write protection switch to the left or "lock"  position prevents any data writing or accidental erasure of critical files. Sliding the switch back to the right or "unlock"  position allows data to be written to or changed from the USB TravelDrive™.

2. LED Power and Activity Monitor

When the green LED is lighted, the TravelDrive™ is powered and recognized by your computer. When the LED is flashing, that means that data are being transferred to or from your drive. **Always wait until the LED stops flashing before removing the TravelDrive™!** Removing the drive while the LED is flashing risks corrupting the data files and losing access to any other files on the drive.

3. Lanyard Carrying Strap

To attach your Lanyard to your TravelDrive™, remove the portion with the small thin nylon strap by depressing each side of the connector. Once you have removed this connector, slide the small nylon loop thru the cap keyhole and insert the connector end thru the middle of the nylon loop. Reattach the connector to the main strap line of the Lanyard.

IX. Troubleshooting:

1. The green Power and Activity LED does not light.

This means the TravelDrive™ is not receiving power from the USB port. Check to see if the computer recognizes the device as attached and active. In Windows®, double-click the "My Computer" icon to bring up a list of active drives. If your TravelDrive™ does not appear there, unplug the device and reboot your computer. Insert the drive again after rebooting. Windows® 98 SE users may have to reinstall the drivers. For all other operating systems, repeat steps listed in section VII: Using Your TravelDrive™.

2. The TravelDrive™ appears to be full, but I can't find any files on it.

The files may have been corrupted if data were interrupted during a transfer, either by too early a removal or by a power interruption. Restart your computer and attempt to access your drive. Otherwise, you may need to attempt using some recovery software to possibly rescue some files on your TravelDrive™. At this time, Memorex does not have any specific software that it can endorse or support to perform this operation. If this operation is not required or the files on your drive are not needed, you will have to reformat your TravelDrive™ to regain its functionality.

IMPORTANT NOTE: Reformatting permanently erases all the data on the TravelDrive™, and you will lose any unsaved files. See "XI. Reformatting" below.

- 3. My TravelDrive™ will not let me transfer files from my Mac to my PC or vice versa.**
The Mac is able to use storage devices formatted with the FAT (File Allocation Table) file system. This works great with Mac Operating Systems OS 8.6 through 9.21, the FAT file system is compatible with PCs. Mac OS 9.22 to 10.3 or higher treats storage devices using the FAT file system differently, this may cause re-indexing of FAT and FAT 32 files. For those systems you may have to format the TravelDrive™ for Mac use only with the HFS or HFS+ formats.
- 4. The data transfer speeds for the TravelDrive™ are not much faster than before.**
There are many factors that affect transfer speed performance. The USB ports on your computer may be USB 1.1 and not USB 2.0. The TravelDrive™ reaches its fastest speeds with USB 2.0 connections, which can achieve ten times the speed of USB 1.1. The device works with USB 1.1 ports, but it will not reach its fastest transfer speeds unless you upgrade to USB 2.0.

X. FAQs (Frequently Asked Questions):

- 1. I do not have Internet Access, what should I do to download the Window 98SE required Driver?**
If you do not have internet access, please contact our Technical Support Department at 1-877-IS IT LIVE or 1-877-474-8548 to obtain the Windows 98SE driver.
- 2. Do I have to protect the TravelDrive™ from airport X-rays or magnetic fields?**
No. Normal magnetic fields have no effect on the TravelDrive™. X-rays used in airport security systems will not damage your drive, however it is always wise to make a backup of your files before traveling.
- 3. I don't have USB 2.0. Can I still use the USB 2.0 TravelDrive™ with my USB 1.1 connections?**
Yes. The TravelDrive™ is backwards compatible with USB 1.1
- 4. Can I use a USB 1.1 cable with the TravelDrive™?**
Yes, however, it is recommended to use a USB 2.0 cable to achieve optimum performance.
- 5. I dropped my TravelDrive™ on the ground, and I'm worried that I may have damaged the drive.**
The TravelDrive™ has no moving parts. It is similar to flash media cards and can be used like an external drive. It is also far more tolerant towards physical handling than any disk drive or most other forms of transportable data storage devices. If you can still access files on it, it most likely has not suffered any damage.
- 6. Can I fill the TravelDrive™ to its maximum capacity?**
Yes, but it is not advisable due to the nature of the file structures of re-writable technology used on your TravelDrive and other media such as flash cards and CD-RWs. It is strongly recommended that a small amount of safety margin be reserved to protect access to your files.

7. I accidentally took out the TravelDrive™ while the activity light was flashing. Now it doesn't work. Can it be repaired?

Your TravelDrive™ should still function normally; however, there is a strong likelihood that the file you were transferring may have become corrupted. If that is the case, recovery software may be able to retrieve some critical files. In order to get your TravelDrive™ working again, you may have to reformat the drive.

IMPORTANT NOTE: Reformatting permanently erases all the data on the TravelDrive™, and you will lose any unsaved files. See "XI. Reformatting" below.

8. I've used my TravelDrive™ for a long time, but it's not working as well as before. Do these things wear out?

The mechanics of the TravelDrive™ do not wear out, but over time adding and deleting a great many files leaves anomalies in the file structure that may need fixing up in a manner similar to defragging a hard drive. This is true for all flash media. Transfer all files you want to save to your hard drive and then reformat (see below) the TravelDrive™ to restore its filing structure. It will now work as well as when it was new.

9. When do I have to replace the battery?

Never. The TravelDrive™ draws its power from the USB port. It has no batteries and requires no external power supply to function.

* For further information, please visit our website at www.memorex.com.

XI. Reformatting:

The file structure of a TravelDrive™ can use refreshing over long periods of use just as hard drives need defragging over time to make file access faster. Reformatting the TravelDrive™ restores its file structure if it has been corrupted by an interruption of data transfer due to too early removal of the device or to a power outage during file transfers.

IMPORTANT NOTE: Reformatting permanently erases all the data on the TravelDrive™, and you will lose any files that have not been copied to another hard disk or CD-R. Use extreme caution before performing this operation.

1. Save all files on the TravelDrive™ to another medium such as a hard drive, a flash card, or a CD-R. Reformatting permanently erases all the data on the TravelDrive™, and you will lose any unsaved files.
2. To Format the TravelDrive™, follow the directions listed below based on your computer type:

PC

- a. Close all open applications including anti-virus software that may interrupt the format process and verify that your TravelDrive™ Write-Protect switch is set to the Unlock position..
- b. Double-click on the "My Computer" icon on the desktop.
- c. Right click on the "Removable Disk" icon with the drive letter assigned to your TravelDrive™.
- d. Select "Format" from the drop-down menu that appears.
- e. Optional: Type in a name in "Volume label" if you have more than one TravelDrive™ and prefer to assign names to differentiate them.
- f. Click on "Start." A warning notice that all data will be erased pops up. Click "OK." The formatting will only take a few seconds, and a "Format Complete" notice will appear when the formatting is done.
- g. Your TravelDrive™ should be recognized by your system at this point. You can return to using your drive as before.

Apple Macintosh

Mac OS 8.6~9.1:

- a. Close all open applications including anti-virus software that may interrupt the format process and verify that your TravelDrive™ Write-Protect switch is set to the Unlock position.
- b. Click on "Special" on the toolbar.
- c. Click on "Erase Disk."
- d. Choose your Format (DOS[works with PC's], Pro DOS or Mac OS Standard).
- e. Click on "Erase" to start the formatting process.

Mac OS X:

- a. Close all open applications including anti-virus software that may interrupt the format process and verify that your TravelDrive™ Write-Protect switch is set to the Unlock position.
 - b. Open your "Applications" folder.
 - c. Open your "Utilities" folder.
 - d. Click on "Disk Utility."
 - e. Your TravelDrive™ will be listed to the left of the program by its capacity and with a drop down description that says "untitled." Click on the drive capacity listing to get the Erase options.
 - f. Choose the "Mac OS Extended" format for the use with only Mac systems.
 - g. Check the box "Install Mac OS 9 Drivers"; this will allow for better Mac compatibility with older systems.
 - h. Click on the "Options" button.
 - i. Check the box "Zero all data" to fully format the drive.
 - j. Click "OK" to accept the selection.
 - k. Click "Erase" to initiate the format process.
 - l. Click "Erase" to verify that you want to start erasing the drive.
- The TravelDrive™ should be mounted as "Untitled" after following the above steps.

NOTE: Once you have changed the format of the TravelDrive™ from FAT or FAT32 to another format, it may not be able to be used on a PC. It will become a Mac-only device. Using the "DOS" selection (if available) will allow PC compatibility.

XII. Technical Support:

To receive technical support for your Memorex® TravelDrive™, please visit our website at www.memorex.com or call 1-877-Is It Live... Or 1-877-474-8548. Register your product under Service and Support, Warranty Registration.

XIII. Limited 1-Year Warranty:

Memorex Products warranties this product against defects in materials or workmanship for one year from the date of purchase. This warranty applies to the original purchaser; proof of original retail purchase is required. This warranty specifically excludes damage caused by misuse, abuse, improper storage, or use in a commercial application. No warranty of merchantability or fitness for a particular purpose is made. In the event of a claim against this warranty, Memorex Products' obligation and the claimant's sole remedy shall be replacement of the product. This warranty specifically excludes responsibility for recorded data in any form.

XIV. FCC Certification Statement:

This device complies with FCC Part 15 Class B of the FCC Rules and is designed to provide reasonable protection against radio and television interference. Although the equipment has been tested and has been found to comply with the allowed FR emission limits as specified below, there is no guarantee that interference will not occur in certain situations.

This device's operation is subject to the following conditions:

1. This device may not cause harmful interference and
2. This device must accept any interference received, including interference that may cause undesired operation.

Elimination of interference can occur by using one of the following:

1. Reorient the affected device.
2. Increase the distance between the affected device and the computer equipment.
3. Plug the computer and its peripherals into a different branch circuit from that used by the affected device.

Memorex® TravelDrive™ is a registered trademark of
©2004 Memorex Products, Inc. • Cerritos, CA 90703

5395 7147

Microsoft And Windows are registered trademarks of the Microsoft Corporation.

Apple and Macintosh are registered trademarks of Apple Computers Inc.

All other trade names referenced in this manual are of their respective owners.

Memorex Products, Inc. reserves the right to change specifications without notice.